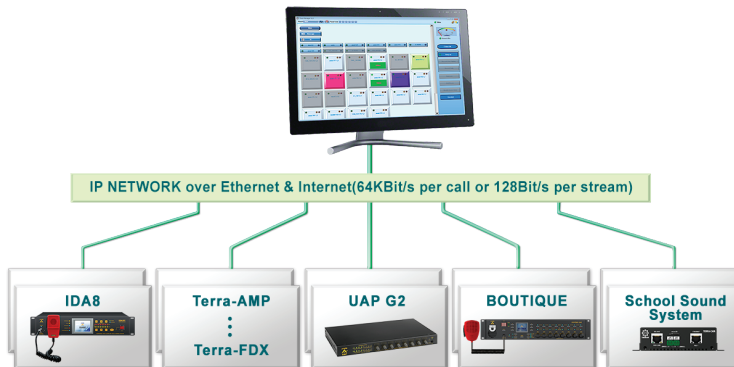


**PAGING · INTERCOM · MUSIC STREAMING · AUDIO ROUTING
SCHEDULER · IN-STORES · CONTROL · MONITORING**

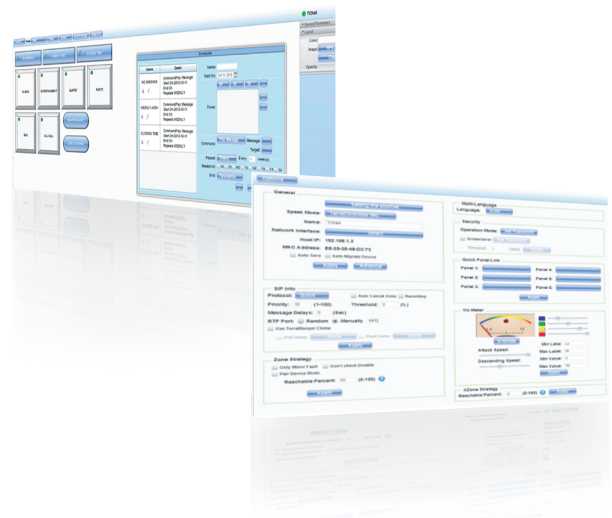


The TerraManager is an integrated control software which operates on a touch screen PC/Laptop and provides an GUI components to control ATEIS products such as IDA8, BOUTIQUE, and TERRACOM system etc., and can also support by 3rd party control.

The TerraManager can perform call-paging (Unicast/Multicast/Broadcast), IPS (Internet Paging Service), full duplex intercom, music streaming, background music routing, message playing, recording and event scheduling, device I/O monitoring, parameter presets, TTS SVE (Text To Speech - Synthetic Voice Engine), volume control (3rd party) and numerous other control functions. Meanwhile, the TerraManager can monitor all zones, list the logs/faults and display the status of the current paging sources.

FEATURES

- Support TCP, UDP, SIP, RTP and IGMP protocols
- Support paging (Unicast/Multicast/Broadcast) and full-duplex intercom
- Various zone buttons selections, including single zone, group zones or message broadcasting
- AOIP (Audio over IP)
- Multi language tool
- 3rd party control via UDP, TCP and Modbus protocols for real-time emote control
- Configurable prerecorded audio sources for zone broadcasting, scheduler arrangement
- Supports Session Initiation Protocol (SIP) and quick paging mode
- Auto time-saving tool to play messages by the event sceduler
- Control function: paging, intercom, music streaming, audio routing, event and bell scheduler



APPLICATIONS

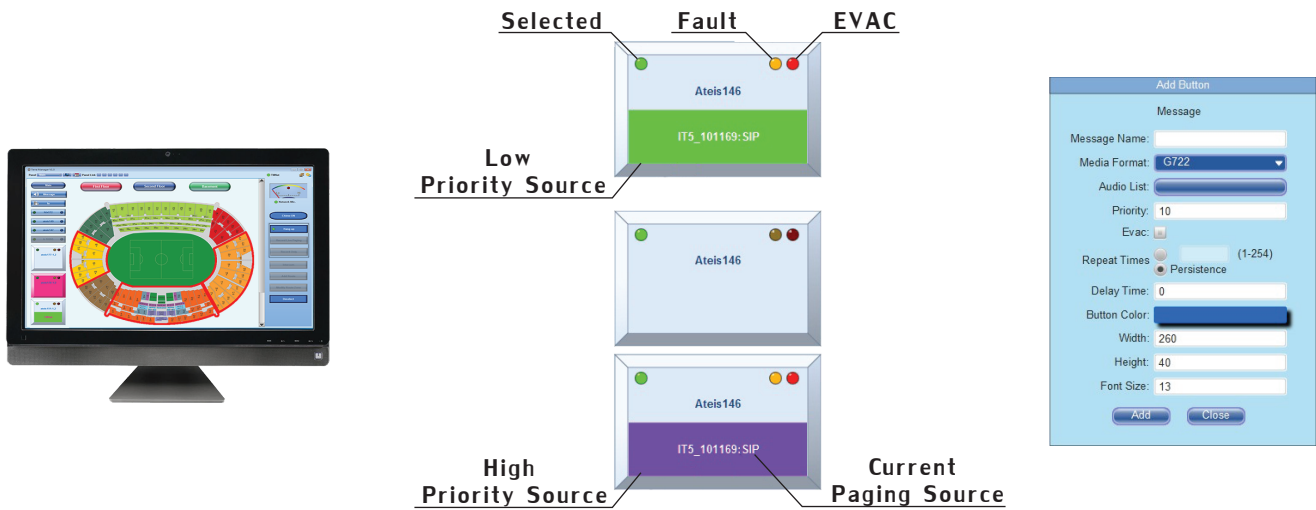
- **SIMPLE & MEDIUM-SIZED SYSTEMS**
 - Stores (Restaurant, Shopping Malls)
 - Office/Industrial Buildings
 - University Campus or Education Institution
- **FULLY INTEGRATED LARGE-SCALE SYSTEMS**
 - Transportation (Railways, Subways, Airport)
 - Museums/Theme Parks/High-Rise Buildings
 - Hotels/Churches/Arenas

SYSTEM REQUIREMENTS

- CPU:> 2.5 GHz, Dual Core
- Memory: > 2 GB RAM
- Hard-Disk: > 500GB
- Java Runtime: Java 8 update 60
- OS: Windows 7 SP1/8.1/10
- VGA Card
 - NVIDIA: GeForce100 series or higher
 - ATI: Radeon HD 4000 or higher
 - Intel: GMA 4500 or higher
- Others
 - Network Card
 - Network bandwidth: > 100Mbps

HOW TO RUN TERRAMANAGER SOFTWARE

The TerraManager allows you to integrate the zone or image buttons in a software GUI. The custom style of buttons can be configured in the "User Mode". The integration can be applied in diverse situations, from a medium size educational institution or multi-floor building, to a large-scale stadium with several regions, users can easily separate each area into different layers. Under each layers, users are able to create more image buttons for different targeted zones. Layers are connected together via a "panel link" button which offers users a clear and organised layout for operation.



To create and expand the paging zones in TerraManager, the BOUTIQUE system can be integrated with TerraManager via LAN/WAN for network paging and intercom control. The TerraManager will control/monitor the BOUTIQUE controller and the connected Terracom device will act as an "agent".

Device	Name	IP	MAC	
<input checked="" type="checkbox"/>	DVA	JESSIETEST	192.168.100.61	00-14-7A-CC-F8-07
<input checked="" type="checkbox"/>	ECS	ECS4	192.168.101.4	00-22-13-00-08-AA
<input checked="" type="checkbox"/>	PPM1T5	IT5-101168	192.168.101.168	00-22-13-00-24-9D

