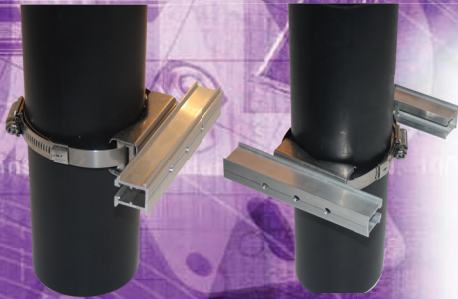


ACCESSORIES



◀ POLE MOUNT BRACKETS

We offer a range of adjustable pole mount brackets to suit various pole sizes from 55mm - 190mm in diameter. We can supply single or back to back mounts suitable to take speaker loads of up to 30kg.

TYPE 1 - Fits 55-70mm diameter poles

TYPE 2 - Fits 70-100mm diameter poles

TYPE 3 - Fits 100-130mm diameter poles

TYPE 4 - Fits 130-190mm diameter poles



◀ CLUSTER BRACKETS

PEN1063 & PEN1065

These versatile brackets are suitable for a wide range of Penton products where a cluster of speakers may be required.

The unit can be suspended via the central conduit hole or via the four mounting holes provided for suspension chain or tension wire.



◀ SWIVEL BRACKET

PEN1066

This omni directional swivel bracket enables adjustment of the loudspeaker in both vertical and horizontal planes with ease. Manufactured in cast aluminium, it is capable of carrying 10 Kilos of weight.



◀ CLEAN ROOM SPEAKER COVER

CRSC/6

This simple but versatile cover can be used for many applications such as converting standard ceiling loudspeakers for use in clean rooms, damp & humid atmospheres such as shower rooms, wet storage and exterior applications.



Penton UK Ltd

Unit 2 Teville Industrials | Dominion Way | Worthing | West Sussex | BN14 8NW

T: +44 (0)1903 215315 | F: +44(0)1903 215415 | E: SALES@PENTONUK.CO.UK

www.pentonuk.co.uk



September 2016