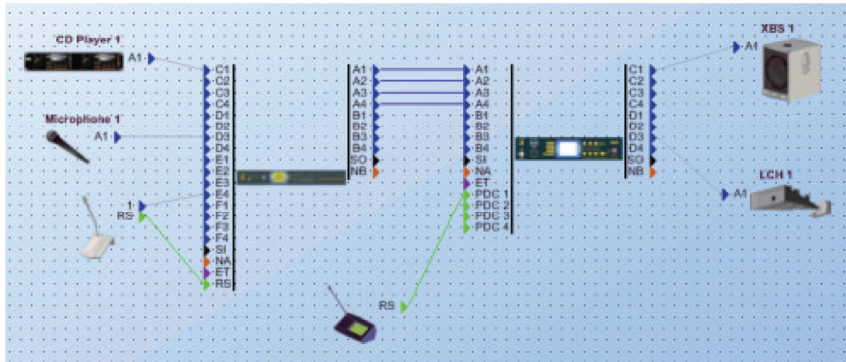




ATEIS STUDIO

POWERFUL DIGITAL SIGNAL PROCESSING



ATEIS Studio is a user-friendly software designed for intuitive system setup and control. The PC based software allows hardware updating, full system configuration and generates the user interface for day-to-day system operation.

GRAPHICAL USER INTERFACE

ATEIS Studio allows complete PAVA/audio systems that incorporate a range of devices to be configured, monitored and controlled centrally from a single user interface. The software enables a comprehensive overview of the system and its virtual connections and also offers control and configuration for power amplifiers, paging consoles and remote controllers such as PSS-AS, CD16-AS and URC-AS devices.

DIAGNOSING

ATEIS Studio monitors, controls, logs and reports a range of events. The whole system configuration preset can be stored and reloaded at the press of a button, depending on application. Users can tailor design elements of the graphic user interface or control panels, as well as program automatic sequences of events and create different levels of user access for security and rights management.

BUILDING

ATEIS Studio provides a complete set of tools and building blocks for real-time control, monitoring and design of an audio system or Voice Evacuation system from paging console to loudspeaker. Detailed information such as signal levels, loudspeaker impedance, pre-recorded messages, amplifier conditions and other parameters can be monitored in real-time.

A comprehensive library of tools, control and monitoring elements is provided along with the GUI, including items such as volume control faders, metering, high-level EQ, compression, limiting, auto-gain, noise sensing, mixing, shortcut buttons and display elements. Element behaviour can be fully tailored to suit each application. Built-in file transfer software transfers both data and audio files from the PC to the network controller.

Additional security can be added to the software with password-protected layers according to EN 54-16. Multiple users can be created and assigned, each with a unique password and access to specific layers of the GUI. This creates a control surface specific to the needs of system designers and operators at multiple levels.

CONFIGURATION SOFTWARE

- Runs on Windows
- Assignable access levels with rights management
- All system and unit parameters can be configured
- Easy navigation
- Drag & Drop features
- Real-time monitored

DIAGNOSTIC AND LOGGING SOFTWARE

- Call, fault and general event logging
- On-line logging function
- Historical logging
- Event display priority can be changed
- Password-protected

FILE TRANSFER SOFTWARE

- PC-based application
- Supplied together with the network controller
- Creation of message sets
- Off-line configuration

NOTE:

ATEIS STUDIO SOFTWARE VERSION:
Version 1.X.X.XX for ATEIS Local-Net

ATEIS GLOBAL-NET SYSTEM:

Version 3.X.X.XX for ATEIS Global-Net

ATEIS Global-Net, can be a network of more than one controller(Matrix Mode and Switch Mode) and a maximum up to 31 IDA8Sxx Slave units (Matrix Mode and Switch Mode) in a local system.

BY

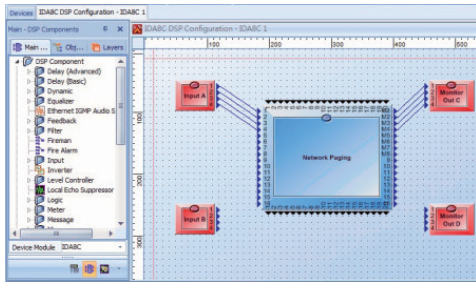




ATEIS STUDIO

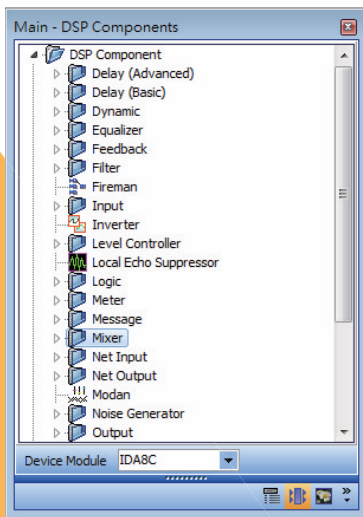
POWERFUL DIGITAL SIGNAL PROCESSING

ATEIS designs and manufactures leading products in the digital public address & voice alarm systems market. The IDA8 series is already being used in highly demanding public transportation networks in Europe, the United States, Asia and the Middle East where it provides a high-tech audio communication solution that combines redundant networks on CAT5, Fiber-optic and TCP-IP. The IDA8 series of products is the ideal choice for commercial audio applications where Voice Alarm as well as scheduled events and background music are an integral part of the sound system.



Drag & Drop:

After determining the devices included in your system, you can start configuring the internal signal paths independently for each unit with a huge array of DSP components available to program exactly what you need. Simply Drag & Drop the components and connect them. The all-in-one manipulating platform enhances an easy-to-use and real-time monitored tool, helping you to concentrate on creating the system using cutting-edge technology.



VOIP

The IDA8 system supports Voice over IP based on the SIP protocol using a PPM-IT5 paging remote or a SIP phone the user can page into speaker zones of the IDA8 via a long distance LAN and WAN network.



Feedback Suppressor

Breakthrough feedback cancellation corrects feedback and alleviates the annoyance automatically. The feedback component analyzes the signal and detects the feedback frequency and adaptively attenuates it. There are four types of feedback components which correspond to the numbers of filters (4, 8 12 or 16) that the component will use.



Page Control

Larger PAVA systems can require a huge number of zones for paging. With the Network Paging component multiple IDA8 units can be linked easily while creating a design. Audio, Priority and activation triggers are transmitted to other units via the ATEIS Net.



Telephone Card

The Telephone Card component is based as a traditional telephone interface which manages the telephone calls into an IDA8 system. Via a TC transmit component and a TC receive component it is possible to make announcements to specific zones or trigger logic outputs through DTMF tones.



Penton UK Ltd.

Unit 2, Teville Industrials, Dominion Way, Worthing, West Sussex, BN14 8NW, UK

+44 (0)1903 215315 • sales@pentonuk.co.uk • www.pentonuk.co.uk

www.pentonuk.co.uk



BY